

STATE OF FLORIDA
COUNTY OF BROWARD
I HEREBY CERTIFY that this is a true and correct copy of a map or plat as the same appears of record in Plat Book 9 at Page 59 of the public record of Broward County Florida. WITNESS my hand and official seal in the City of Fort Lauderdale, FL this 21 day of FEB. A.D. 1968
L. A. HESTER, County Administrator
By *[Signature]*

Fairview

A SUBDIVISION IN
SECTION 2, T49S R42E
for
LAKE VIEW LAND CO.
OF POMPANO
J.S. RHINE CIVIL ENGINEER
SCALE 1"=100' OCT 1925
POMPANO, BROWARD CO. FLORIDA.

STATE OF FLORIDA
COUNTY OF BROWARD
Know all men by these presents that the LAKEVIEW LAND CO. a corporation under the laws of the State of Florida, owner of the lands described herein, have caused the same to be surveyed and plotted according to the plat hereon, and do hereby dedicate to the perpetual use of the public all streets and avenues and alleys as shown hereon.
In testimony whereof, said corporation has caused this instrument to be signed by its Vice President, attested by its Secretary and the corporate seal to be affixed to this instrument of November 14, 1925.
WITNESSES
[Signature] 2nd VICE PRESIDENT
[Signature] ASST. SECRETARY

STATE OF FLORIDA
COUNTY OF BROWARD
On this 14th day of November A.D. 1925, personally appeared before me, the undersigned authority, L.N. Conrad, 2nd Vice President and Secretary, first Sec. of Lakeview Land Co., and each of them did acknowledge to me the execution of the foregoing instrument of dedication by and with the authority of the Board of Directors of said Corporation.
In testimony whereof, I have hereunto set my hand and seal of office the day and year first written above.
[Signature] Notary Public, State of Florida at Large
My Commission Expires Aug 25, 1929

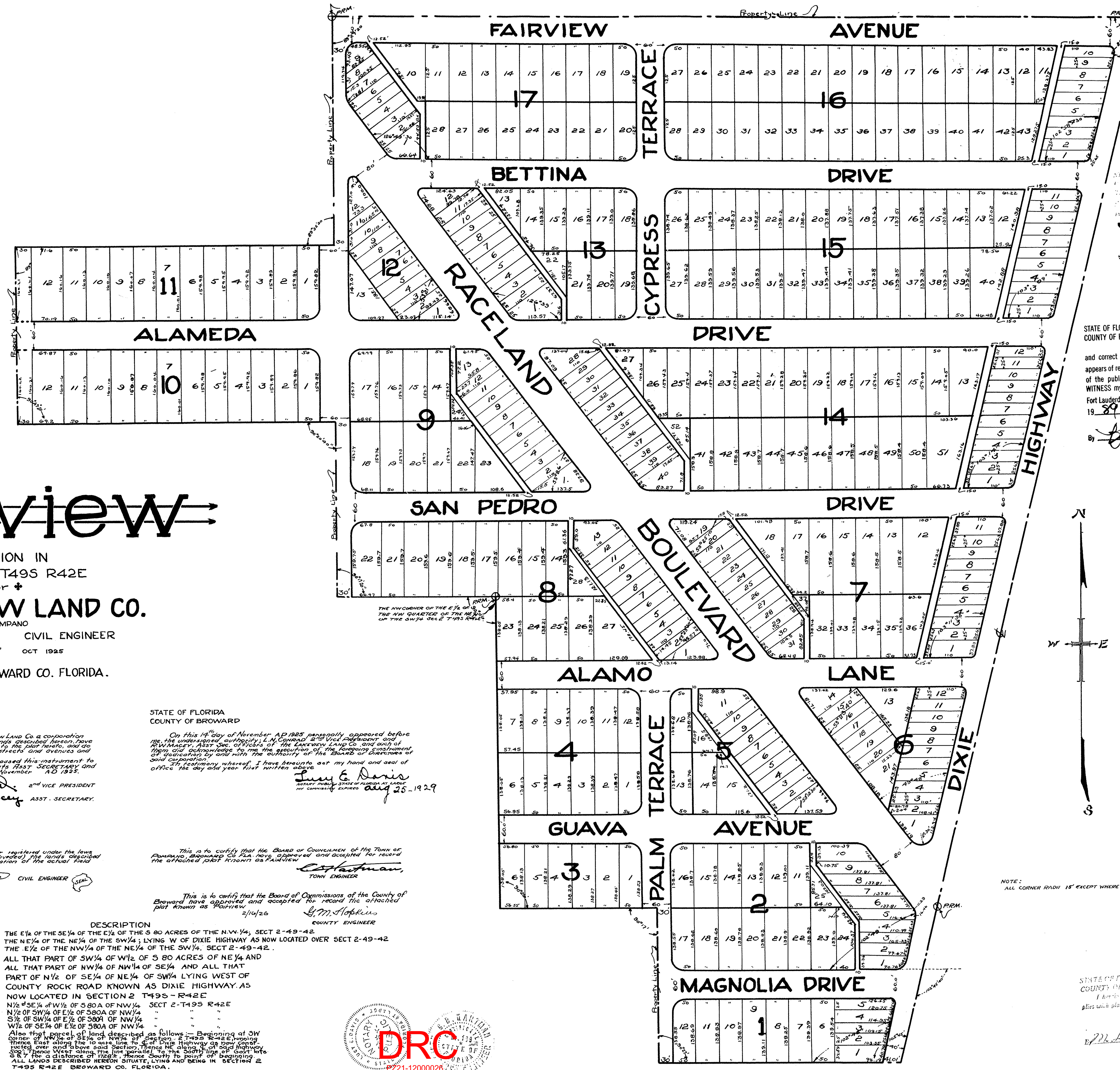
This is to certify that the Board of Commissioners of the Town of Pompano, Broward Co. Fla. have approved and accepted for record the attached plat known as Fairview.
[Signature] TOWN ENGINEER

This is to certify that the Board of Commissioners of the County of Broward have approved and accepted for record the attached plat known as Fairview.
2/10/26 *[Signature]* COUNTY ENGINEER

DESCRIPTION
THE E 1/2 of the SE 1/4 of the E 1/2 of the S 80 ACRES OF THE N.W. 1/4, SECT 2-49-42.
THE NE 1/4 of the NE 1/4 of the SW 1/4; LYING W OF DIXIE HIGHWAY AS NOW LOCATED OVER SECT 2-49-42.
THE E 1/2 of the NW 1/4 of the NE 1/4 of the SW 1/4, SECT 2-49-42.
ALL THAT PART OF SW 1/4 OF NW 1/4 OF SE 1/4 AND ALL THAT PART OF NW 1/4 OF NW 1/4 OF SE 1/4 AND ALL THAT PART OF N 1/2 OF SE 1/4 OF NE 1/4 OF SW 1/4 LYING WEST OF COUNTY ROAD ROAD KNOWN AS DIXIE HIGHWAY AS NOW LOCATED IN SECTION 2 T49S - R42E
N 1/2 SE 1/4 of W 1/2 of S 80A of NW 1/4 SECT 2-T49S R42E
N 1/2 of SW 1/4 of E 1/2 of S 80A of NW 1/4
S 1/2 of SW 1/4 of E 1/2 of S 80A of NW 1/4
W 1/2 of SE 1/4 of E 1/2 of S 80A of NW 1/4
Also that parcel of land described as follows: Beginning at SW corner of NW 1/4 of SE 1/4 of NW 1/4 of Section 2 T49S R42E, running thence East along the 100' line to East Dixie Highway as now located over and above said Section, thence NE along 1/2 of said highway 667' for a distance of 1728', thence South to point of beginning. ALL LANDS DESCRIBED HEREON SITUATED LYING AND BEING IN SECTION 2 T49S R42E BROWARD CO. FLORIDA.

STATE OF FLORIDA
COUNTY OF BROWARD
This is to certify that the attached plat conforms to an Act to regulate the making of surveys and filing the record of maps and plats in the State of Florida approved by the Governor the 11th day of June A.D. 1925.

CLERK CIRCUIT COURT



31519
STATE OF FLORIDA
COUNTY OF BROWARD
I HEREBY CERTIFY that this is a true and correct copy of a map or plat as the same appears of record in Plat Book 9 at Page 59 of the public record of Broward County Florida. WITNESS my hand and official seal in the City of Fort Lauderdale, FL this 27 day of FEB. A.D. 1968
L. A. HESTER, County Administrator
By *[Signature]*

NOTE: ALL CORNER RADII 15' EXCEPT WHERE OTHERWISE NOTED

STATE OF FLORIDA
COUNTY OF BROWARD
I hereby certify that the within plat conforms with plat law of 1925 General Acts.
FRANK A. BRYAN, Clerk Circuit Court

DRC
P221-12000026
12/01/2021

DRC
P221-12000026
07/07/2021